

A1phadeck

AA2

Case Study - Salford

A1phadeck AA2 Case Study - Salford

Approved Building Products Limited

3rd Floor,
86-90 Paul Street,
London,
EC2A 4NE

Tel: 0808 1961798

Email: info@approvedbuildingproducts.co.uk

www.approvedbuildingproducts.co.uk

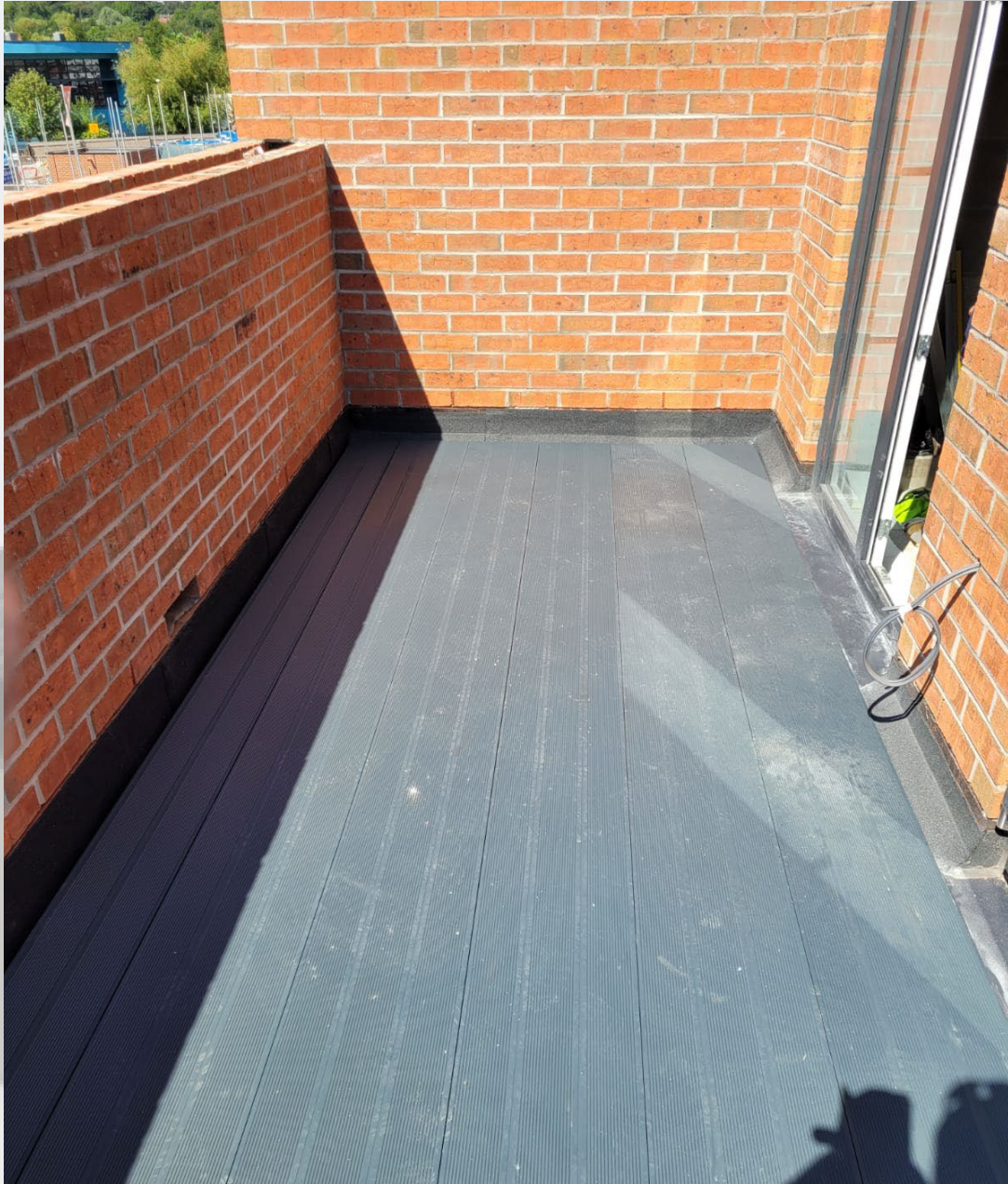


APPROVED
Building Products

A1phadeck

AA2

A1phadeck AA2 Case Study - Salford



Project Name: Seedley Site B

Location: Salford

Works: A1phadeck AA2 system in Anthracite Grey to 66 new build plots

Approved Building Products Limited

3rd Floor,
86-90 Paul Street,
London,
EC2A 4NE

Tel: 0808 1961798

Email: info@approvedbuildingproducts.co.uk

www.approvedbuildingproducts.co.uk



A1phadeck

AA2

Systems: A1phadeck AA2 – Anthracite Grey – 295mm Wide triple planks – 15.75mm depth. A1phadeck Joist System and A1phapeds of varying sizes

Project Size: 1019m² on 116 balconies over 66 plots

Project background: A new build project in the heart of Salford, Manchester consisting of 66 new build plots.

The solution: Approved Building Products worked closely with the installation contractor to support a rolling programme. Due to the lack of storage space on the small and busy site, regular deliveries of materials were required to ensure their programme was kept to. With the quick and easy installation of the system, the number of deliveries was limited as the system could be installed across multiple plots within days.

The benefits: The quick installation led to the install programme being completed on each plot within days of being available ensuring follow on trades could also keep to their programme.



Approved Building Products Limited

3rd Floor,
86-90 Paul Street,
London,
EC2A 4NE

Tel: 0808 1961798

Email: info@approvedbuildingproducts.co.uk

www.approvedbuildingproducts.co.uk



A1phadeck

AA2

The quick and easy to install A1phajoint and adjustable A1phaped systems allow for the perfect low-profile system for balconies and terraces where threshold heights are an issue, especially around door and window thresholds.



A1phadeck AA2 Case Study - Salford

The easy to cut nature of A1phadeck AA2 ensures clean edges at terminations.



Approved Building Products Limited

3rd Floor,
86-90 Paul Street,
London,
EC2A 4NE

Tel: 0808 1961798

Email: info@approvedbuildingproducts.co.uk

www.approvedbuildingproducts.co.uk



APPROVED
Building Products